

jethro

The new vehicle system for path guidance and record keeping.

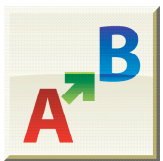
Designed to run on an 'ultra-mobile' PC. Jethro uses the 7" touch screen together with specially build controls to make sure you never need more than one finger to operate the system. There are simple to use wizards to ensure that each task is set up both quickly and correctly.

Features and functions

- ▶ Online guidance display in local grid i.e. OS
- ▶ Area measurement 2D & 3D (hillside) in sq M, acre or hectares
- ▶ Parallel straight lines, parallel curved lines, & contouring
- ▶ 3D guidance display with line numbering
- ▶ Built in light-bar display
- ▶ 7" full colour screen
- ▶ Operator input for job tracking for traceability
- ▶ Point logging on the move (drop a flag out of chemical)
- ▶ DGPS 12 channel 5hz free signal service

Options include

- ▶ Multiple camera input same screen
- ▶ Automatic boom section control to reduce overspraying
- ▶ In cab printer
- ▶ Ground speed radar output
- ▶ 8 data inputs / outputs
- ▶ Hillside compensator
- ▶ Upgrade to RTK



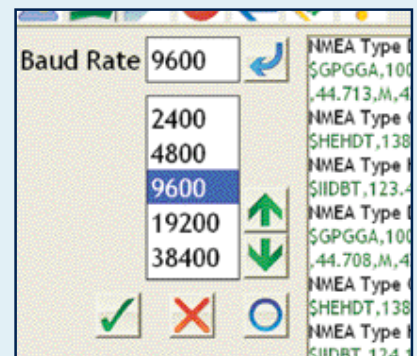
Path guidance with easy to use wizards

The A-B wizard guides you through the relevant setup pages quickly and simply, it then passes you out to the online guidance display all set up and ready to roll.

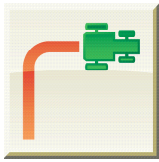


Ultra-mobile PCs

These new devices feature a full Windows XP operating system, typically a 7" touch screen display. Special controls have been developed to use with these devices that mean you never need to use more than one finger to operate the system.

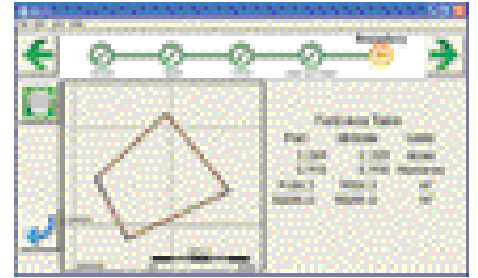
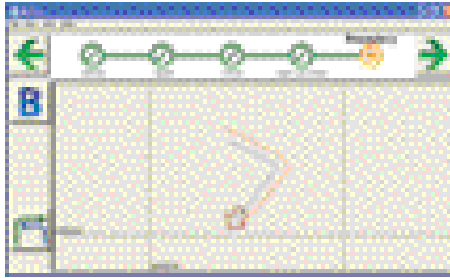
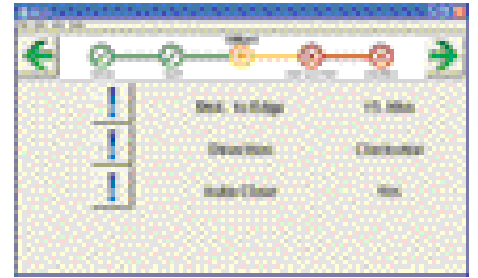
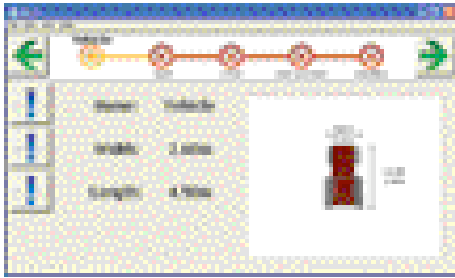


Continued ▶



Accurate A-B area measurement in 2D and 3D

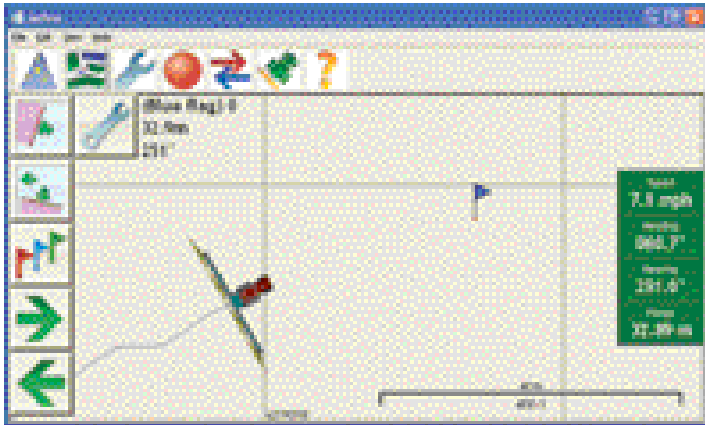
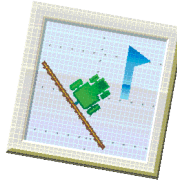
The area measurement wizard guides you through the relevant setup pages quickly and simply, on completion you can then review the sizes and print a report. You are then returned to the main wizard menu so you can step right into an A-B line.



Point logging on the move

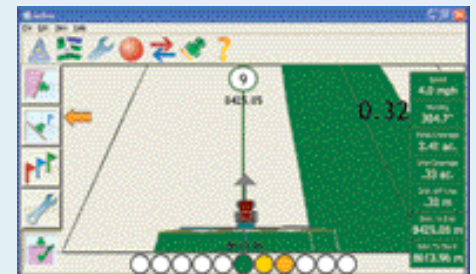
Pressing the flags button at any time allows you to place a flag. Then, at a later stage, you can navigate back to the flag by pressing the target button and following the target guidance.

Then, at a later stage, you can navigate back to the flag by pressing the target button and following the target guidance.



3D guidance display with line numbering

The guidance display is highly configurable with a built in light bar, status boxes, left-right arrow indicators and coverage areas shown with visible overlaps.



Online guidance and display in local grid

All positions are reported in Ordinance Survey coordinates, this means that output positions and structures can be directly related to existing maps and charts.

Require Bespoke Development?

The Acclaimed Software Company are providers of bespoke application software for PCs, the Mobile Mapper and PocketPC platforms. To find out more...call us today!

The Acclaimed Software Company Ltd.
Graphic House, 120 Thorpe Road, Norwich, NR1 1RT
Phone (01603) 633560 Mobile (07971) 886658
E-mail stan.stamper@the-acclaimed.com
Web www.the-acclaimed.com

